

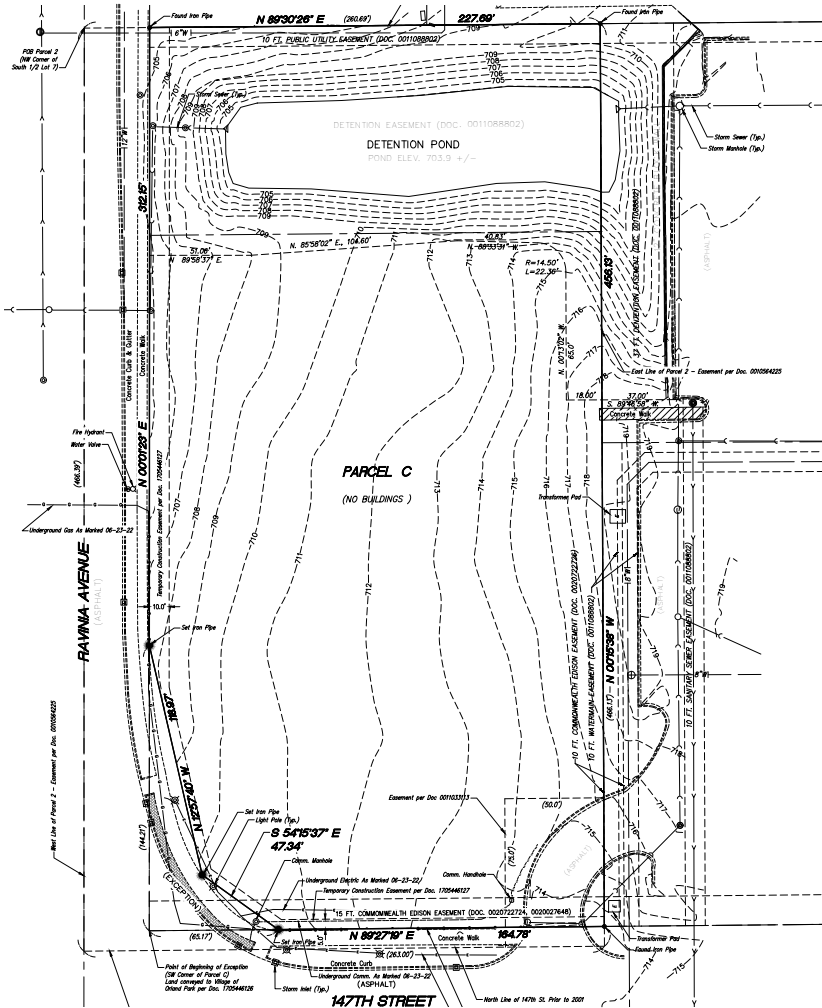


## PROPERTY DESCRIPTION

2.3 Acres available just off of busy LaGrange Road and adjacent to Village Hall. Ideal uses include Medical, Office, Daycare, Multi-Family and Senior Housing. Site is ready for development with utilities and detention in place.

- **SITE SIZE**  
2.3 Acres
- **UTILITIES**  
Utilities and detention in place
- **IDEAL USE**  
Medical, office, daycare, multi-family, senior housing

PLAT OF SURVEY



DEMOGRAPHICS

	1 MILE	3 MILES	5 MILES
■ POPULATION	9,739	65,976	161,364
■ HOUSEHOLDS	3,799	25,349	61,729
■ AVG. HH INCOME	\$97,928	\$116,686	\$118,341

CONTACT INFORMATION

**Kevin Gazley**  
Senior Vice President  
Direct: 847-906-5015  
kgazley@terraco realestate.com

**Joe Goodman**  
Director of Leasing  
Direct: 847-906-5023  
jgoodman@terraco realestate.com

**Terraco Real Estate Development & Management**  
3201 Old Glenview Road | Suite 300  
Wilmette, Illinois 60091  
[www.terraco realestate.com](http://www.terraco realestate.com)