



PROPERTY DESCRIPTION

Brand new exciting mixed use development in the heart of Chicago's hot Logan Square neighborhood. Located at the intersection of Milwaukee and Sacramento in close proximity to many trendy bars and restaurants, the Logan Square Farmers Market and adjacent to excellent public transportation including The "L" Blue Line Station (Annual ridership 238.6 million). Anchored by Target. Delivery expected 2019.

- AVAILABLE SF
2,896 SF

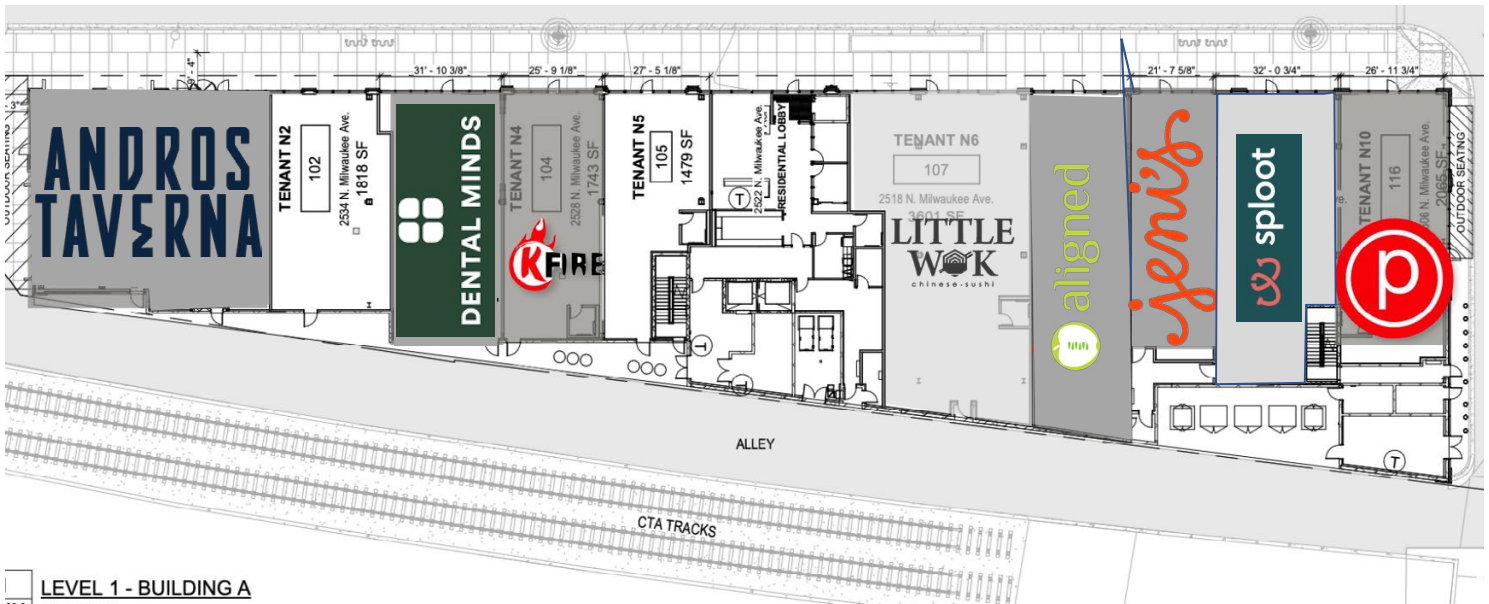
DEMOGRAPHICS

	0.5 MILE	1 MILE	1.5 MILES
■ POPULATION	17,692	72,692	143,180
■ HOUSEHOLDS	7,848	28,482	54,346
■ AVG. HH INCOME	\$65,357	\$59,558	\$66,344
■ DAYTIME EMPLOYEES	3,661	15,153	38,536

SITE PLAN



1 LEVEL 1 - BUILDING B
1" = 30'-0"



00.2 LEVEL 1 - BUILDING A
1" = 30'-0"

CONTACT INFORMATION

Kevin Gazley
Senior Vice President
Direct: 847-906-5015
kgazley@terraco realestate.com

Dan Wander
Senior Vice President
847-906-5019
dwander@terraco realestate.com

Joe Goodman
Director of Leasing
Direct: 847-906-5023
jgoodman@terraco realestate.com