

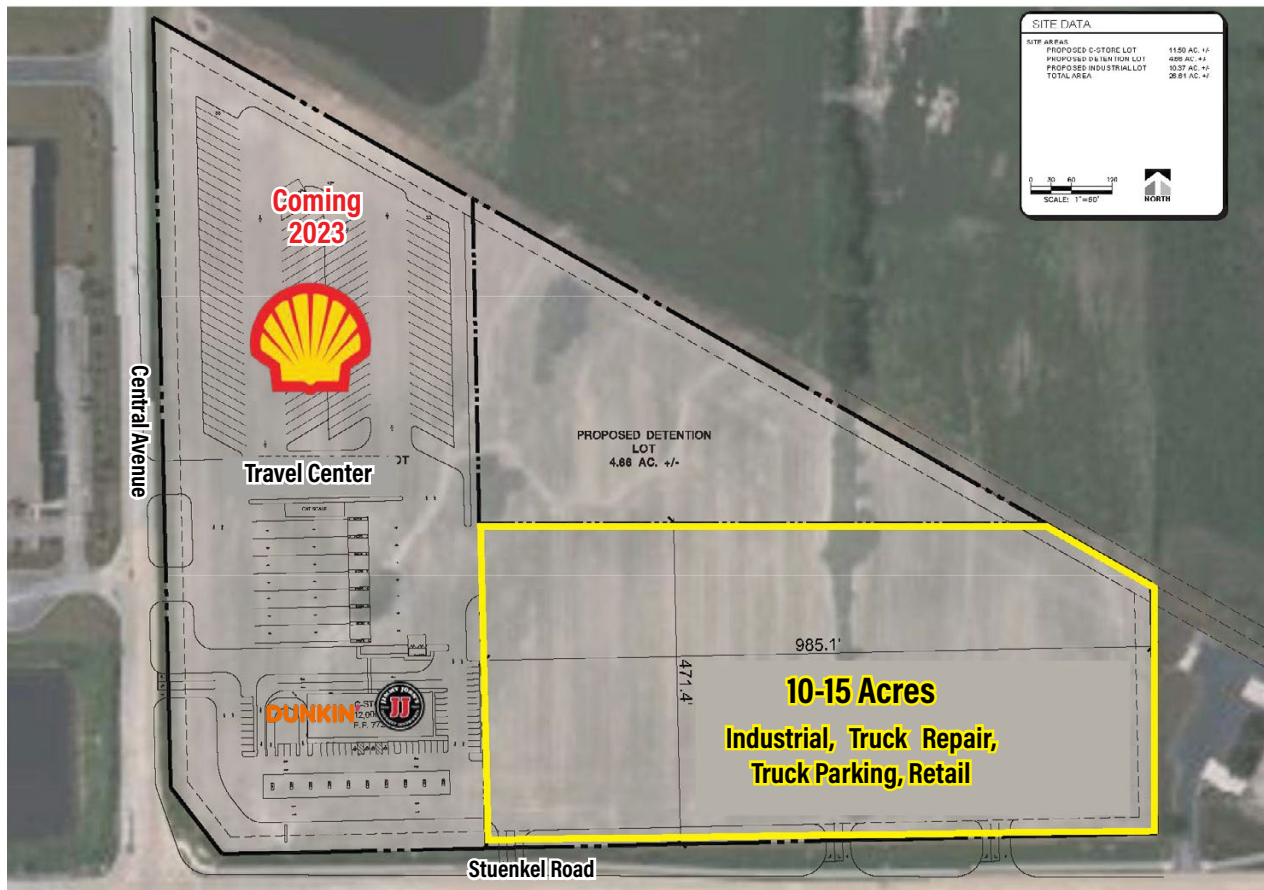
## PROPERTY DESCRIPTION

Brand new 26-acre travel center anchored development is located just off new I-57 interchange in the heart of a major industrial corridor along Stuenkel Road and Central Avenue.

Location is adjacent to Georgia Pacific, DSC Logistics, Dot Foods, and the recent 1.2 million square foot Amazon distribution center.

- **AVAILABLE LAND**  
10-15 Acres
- **UTILITIES**  
All utilities to site
- **IDEAL USE**  
All truck related uses are approved
- **HIGHWAY PROXIMITY**  
One block off I-57 interchange

## SITE PLAN



## DEMOGRAPHICS

	3 MILE	5 MILES	10 MILES
■ POPULATION	20,398	79,023	361,015
■ HOUSEHOLDS	7,479	29,537	131,419
■ AVG. HH INCOME	\$68,656	\$70,846	\$76,138

## CONTACT INFORMATION

### Dan Wander

Senior Vice President  
847-906-5019

[dwander@terraco realestate.com](mailto:dwander@terraco realestate.com)

### Joe Goodman

Director of Leasing  
Direct: 847-906-5023

[jgoodman@terraco realestate.com](mailto:jgoodman@terraco realestate.com)

### Terraco Real Estate Development & Management

3201 Old Glenview Road | Suite 300  
Wilmette, Illinois 60091

[www.terraco realestate.com](http://www.terraco realestate.com)