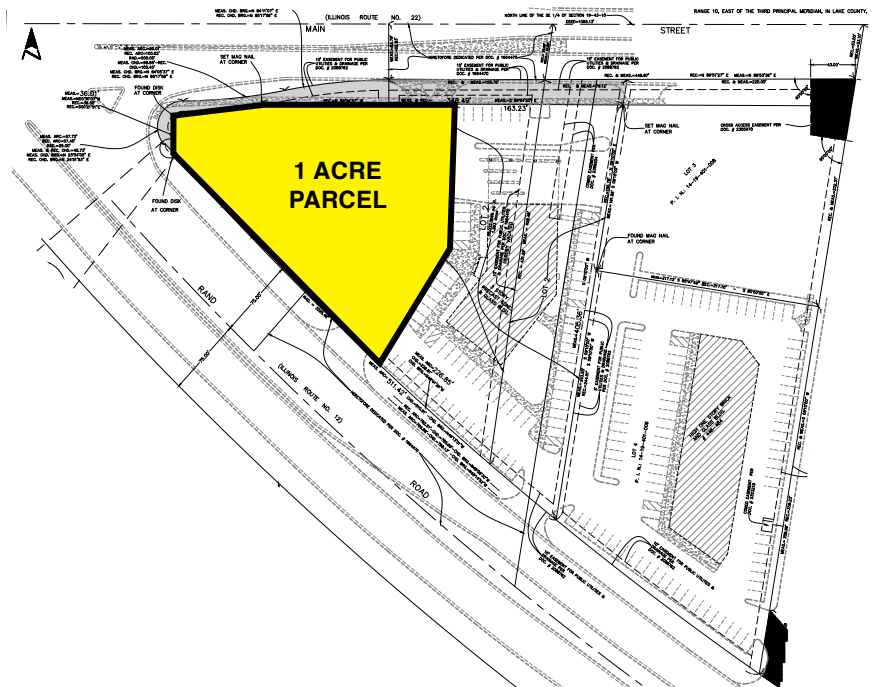


## PROPERTY DESCRIPTION

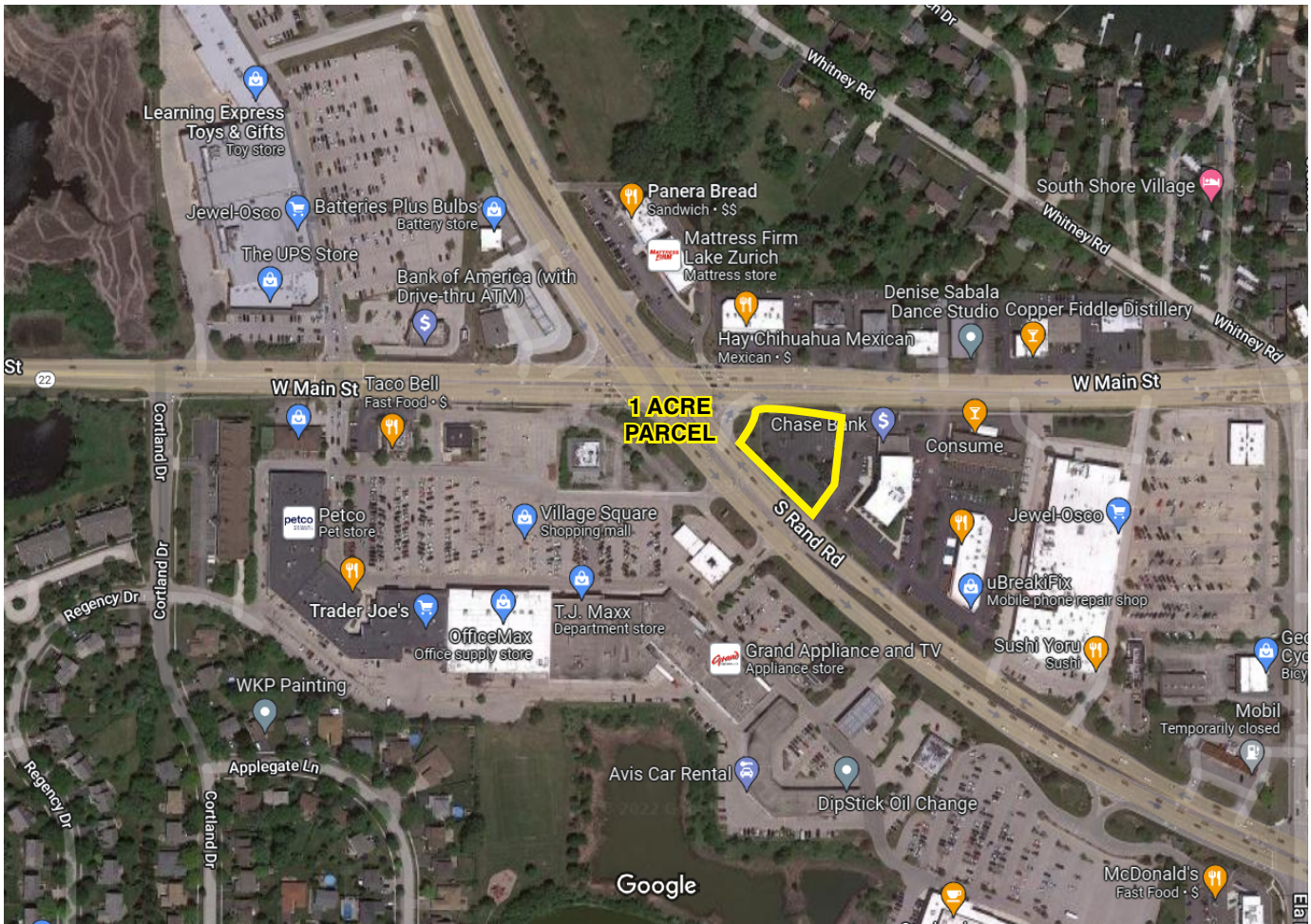
1 acre pad available at regional intersection in the heart of Lake Zurich. Located in affluent market.

Site is ideal for medical, retail or restaurant. Site has excellent access from both Route 22 & Rand Road.

- **AVAILABLE**  
1 Acre
- **TRAFFIC COUNT**  
18,200 VPD along Route 22  
37,900 VPD along Rand Road



## LOCATION AERIAL



## DEMOGRAPHICS

	1 MILE	3 MILE	5 MILE
■ POPULATION	5,904	40,364	89,042
■ HOUSEHOLDS	2,160	14,422	33,055
■ AVG. HH INCOME	\$155,199	\$181,486	\$172,940
■ TOTAL EMPLOYEES	3,788	21,902	41,441

## CONTACT INFORMATION

**Joe Goodman**

Director of Leasing

847-906-5023

[jgoodman@terraco realestate.com](mailto:jgoodman@terraco realestate.com)

**Terraco Real Estate Development & Management**

3201 Old Glenview Road | Suite 300

Wilmette, Illinois 60091

[www.terraco realestate.com](http://www.terraco realestate.com)